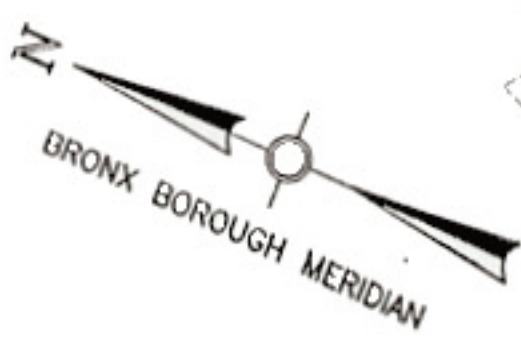


AREA = 176,621 SQ. FT.
OR 4.0547 ACRES



M13-C
P.368

NON-TANGENT CURVE

$\Delta = 36^{\circ}29'08.4''$
 $R = 186.299'$
 $T = 61.406'$
 $L = 118.634'$
CHD = N $85^{\circ}08'15.0''$ E
116.640'

$\Delta = 56^{\circ}01'56.7''$
 $R = 215.030'$
 $T = 114.411'$
 $L = 210.288'$
CHD = S $48^{\circ}36'12.5''$ E
202.008'

$\Delta = 21^{\circ}03'23.8''$
 $R = 186.299'$
 $T = 34.822'$
 $L = 68.463'$
CHD = N $77^{\circ}25'20.3''$ E
68.179'

(OVERALL)
 $\Delta = 17^{\circ}36'33.3''$
 $R = 2199.086'$
 $T = 340.618'$
 $L = 675.866'$
CHD = S $80^{\circ}20'20.4''$ W
673.209'

NON-TANGENT CURVE

HUTCHINSON AVENUE

PINKNEY AVENUE

M13-C
P.368

REF. NO. 432 A
AREA = 176,621 SQ. FT.
OR 4.0547 ACRES

AVENUE

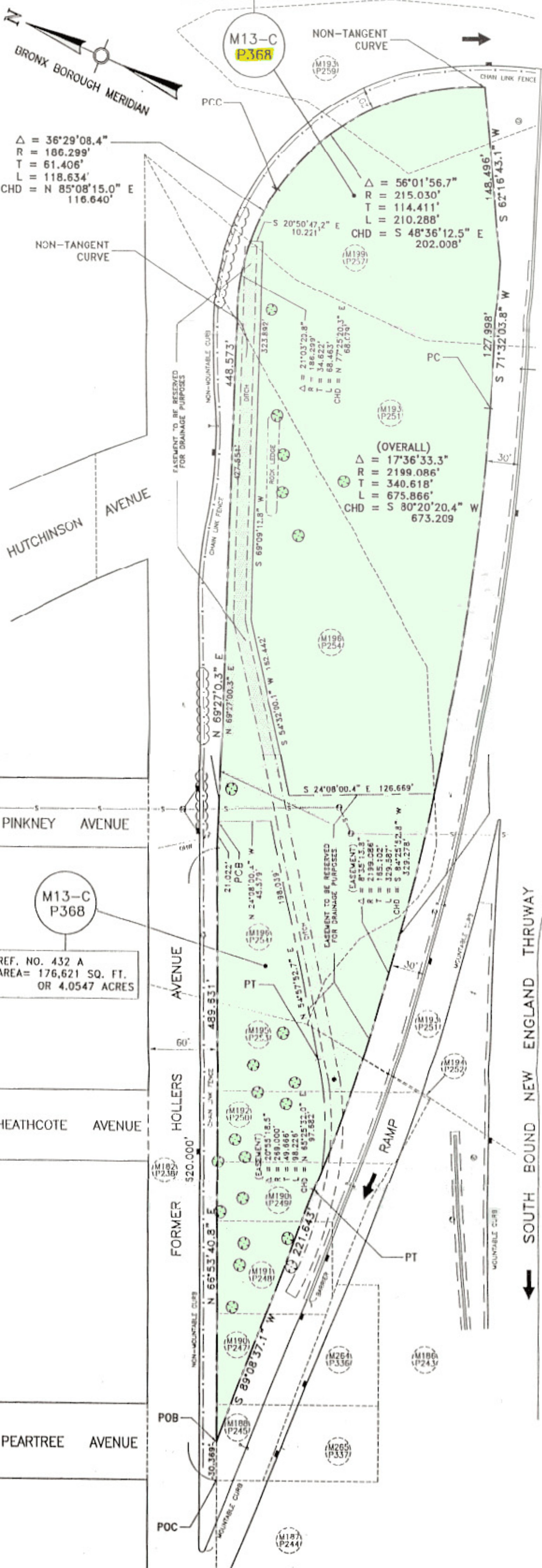
HEATHCOTE AVENUE

HOLLERS AVENUE

PEARTREE AVENUE

FORMER AVENUE

SOUTH BOUND NEW ENGLAND THRUWAY



PCC

(M193)
(P259)

(M199)
(P257)

(M193)
(P251)

(M196)
(P254)

(M199)
(P255)

(M199)
(P256)

(M192)
(P250)

(M190)
(P249)

(M190)
(P247)

(M188)
(P245)

(M187)
(P244)

(M193)
(P251)

(M194)
(P252)

(M264)
(P336)

(M186)
(P243)

(M265)
(P337)

POB

POC

RAMP

PT

PT

MOUNTABLE CURB

MOUNTABLE CURB

EASEMENT TO BE RESERVED FOR DRAINAGE PURPOSES

EASEMENT TO BE RESERVED FOR DRAINAGE PURPOSES

NON-MOUNTABLE CURB

CHAIN LINK FENCE

CHAIN LINK FENCE

CHAIN LINK FENCE

CHAIN LINK FENCE

NON-MOUNTABLE CURB

MOUNTABLE CURB

MOUNTABLE CURB

NON-MOUNTABLE CURB

CHAIN LINK FENCE

CHAIN LINK FENCE

CHAIN LINK FENCE

CHAIN LINK FENCE

NON-MOUNTABLE CURB

MOUNTABLE CURB

MOUNTABLE CURB

NON-MOUNTABLE CURB

CHAIN LINK FENCE

CHAIN LINK FENCE

CHAIN LINK FENCE

CHAIN LINK FENCE

NON-MOUNTABLE CURB

MOUNTABLE CURB

MOUNTABLE CURB

NON-MOUNTABLE CURB

CHAIN LINK FENCE

CHAIN LINK FENCE

CHAIN LINK FENCE

CHAIN LINK FENCE

NON-MOUNTABLE CURB

MOUNTABLE CURB

MOUNTABLE CURB